

Kyu grades January 2004

1 kyu Cédric Fournet, Fabien Letouzey, Yong Mao, Linus Lee Zhi Yuan, Bruce Chen. 2 kyu William Brooks, Matthew Reid, Kim Rutherford, Bin Wu. 3 kyu Andrew Walkingshaw, Roger Murby. 4 kyu Ross Anderson, Christoph Bergemann, Jitse Neasen, Toshio Ohshima, Richard Parker, Paul Russell, Frank Visser, Geoff Walker. 5 kyu Paul Kersey, Ramanando, Andrew Gardner, Ansar Malik. 6 kyu Jaime Crawford, Mark Dalgarno, Chris Goldsmith, Simon Frankau, Andy Plater. 7 kyu Stephen Burgess, Ian Davis, Simon Mader, Alex Ridgeon. 8 kyu Michael Thomas, Tim Wesson. 9 kyu Jenny Hughes, Rob Williamson, Jon Woolf, Toby Kenney. 10 kyu Mathieu Flinders. Geoffrey Kirkness, Andrea Smith, Jonathan Medlock, Tom Ford, Garry Sturley. 11 kyu Steve Cooper, Hoiping Mok. 12 kyu 13 kyu Sumire Ohshima. 14 kyu Peter Jackson, Liwei Deng, Graham Sills, Shuntaro Ohshima. 15 kyu Keith Chan Joseph Insana, George Matthews, Amyas Phillips, Jack Waldron, Takuma Goto, Nick Krempel. 17 kyu Sean Moran, Mark Shaffer, Alistair Turnbull. 19 kyu Chris Cummins, Iain Gunn, Vilhelm Sjöberg, David Evans. 20 kyu Alex Fox, Tom Garnett, Mark Rison. 21 kyu Aldo Faisal, Edwin Thompson, Dennis Chan. 22 kyu Graham Griffiths, Matthew Pritchard, David Dawson, Julian Holstein. 23 kyu Debby Finucane, Tim Wells, Mark Durkee, Peter Janiszewski. 25 kyu Paul Varley.

Keep yourself and us up to date by following <http://www.cam.ac.uk/societies/cugos/club/gradings.html>, which also links to home pages and gives information about those who play online.

Varsity match 2004

This will probably take place in Oxford on February 1 or 15. If you are a student and would like to be involved, contact Steve Burgess.

Dash International Baduk Club Championships start

A Korean outreach event to be played online by club teams of three, this is a way to get that invitation to Seoul. In charge is Sang-dae Hahn, for many years active in Australian go. Entries close 31 January. More at <http://english.dashn.com/>, links permitting; Charles Matthews has further details.

London Open results (28-31 December)

At the reviving LOGC (127 entrants), local interest was Ward 4/8, Hunt 5, Selby 3, Beck 4, Brooks 4, Murby 1/2, Visser 3, Kusumoto 2, Mader 2/4, Anna Griffiths 5, Turnbull 5.

MSO Cambridge 2004 latest

News just in is that the venue – Parkside Community College – and dates May 1 and 2 are now definite. Keep an eye on www.msocambridge.org.uk.

Tesuji

The Cambridge Go Newsletter

No.80 January 2004

CU Go Society

www.cam.ac.uk/societies/cugos/

President

Stephen Burgess (Emmanuel)

sb452@cam.ac.uk

Secretary/Newletter Editor

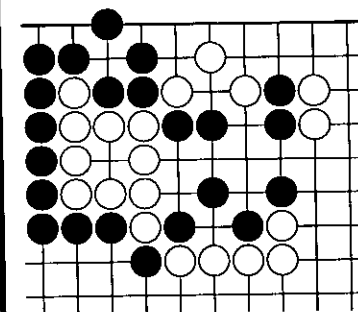
Charles Matthews,

60 Glisson Road Cambridge CB1 2HF,

charles.r.matthews@ntlworld.com,

phone 350096

手筋



Seven play escape White to bring the one-eyed group to safety. See it all through to the last play.

Go meetings around Cambridge

- Mondays: 7.30 pm to late, Latimer Room, Old Court, Clare College
- Tuesday meetings: *The Castle Inn*, Castle Street 7.30 pm.
- Wednesday Junior Chess & Go in school term.
- Thursdays 7 to 9 pm in the University Centre, top floor Reading Room.
- Fridays 7 to 9 pm at 'CB1', 32 Mill Road.
- Sundays informally in CB1, from about 4 pm.
- Other times in CB1.

Happy New Year!

Good news and bad news. The good news is that the club's Library is no longer infested with wasps. Please send Librarian Toby Kenney email (tjk23@cam.ac.uk) if you have books out, to help with the admin. Return and borrow at the Monday meetings. The bad news: diminutive, blond Stephen Burgess is apparently trying to grow a beard.

December Competition Night

Run in Clare BATTERY on 1 December, with David Evans adjudged winner in the Novices Section. On tiebreak Garry Sturley on 5/6 came out ahead of Tom Ford in the main section. Total entry was 23.

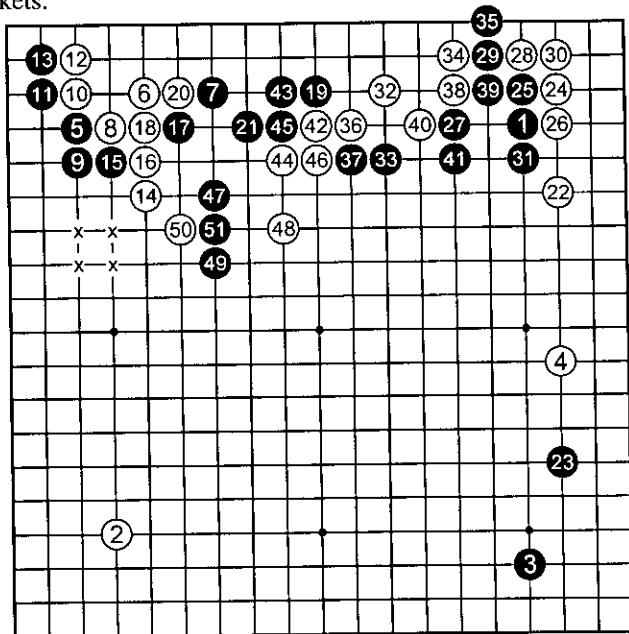
2004 catchphrases

Our predictions: 'about as threatening as a rerun of *The Vicar of Dibley*', 'phoned-in invasion', 'plays, stones, and lives', and 'not that Peter Jackson'.

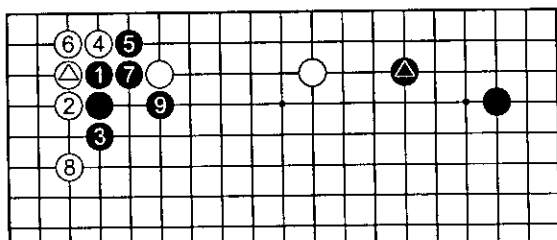
Using the Go Teaching Ladder: consumer test

One of the most useful go web sites is the Go Teaching Ladder at <http://gtl.jeudego.org/>. There one can submit a game record (in the SGF file format) and have it reviewed by a stronger player.

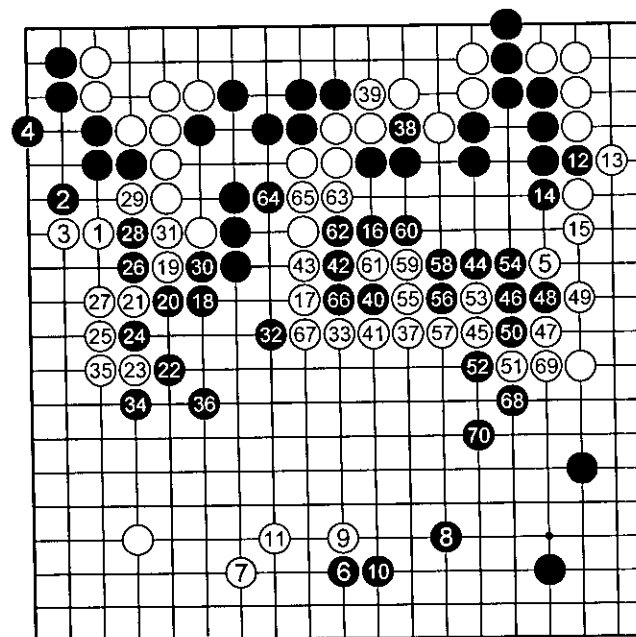
How well does this work out? Here's a game with Black 11 *kyu*, White 10 *kyu*, and the comments supplied by a 1 *kyu*, given in brief. Opinion from Charles Matthews (3 *dan*) in brackets.



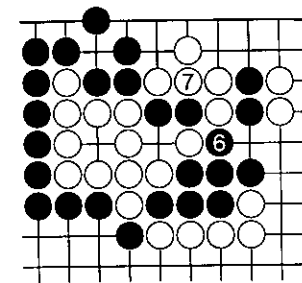
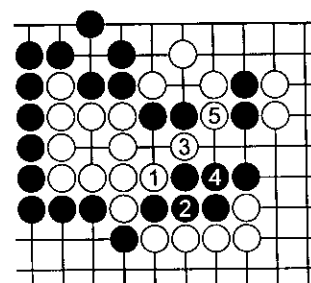
- (1-51) 13 Extend towards the 'x' points before driving White out like this.
 15 (also 20, 45, 51) Don't play moves like this: they only help the opponent.
 21 Too small to play here right now.
 25 Not sure whether to block this side or at 26. 27 Must be at 31.
 32 Too deep: an overplay. 33 in answer is good.
 37 Too close: don't play in contact while attacking.
 (CRM These all seem to be useful comments. Black 21 one to the left is better shape, if you answer at all. You would block the other side with Black 25 to get this:



and now Black's marked stone has attacking meaning.)



- (1-70) 6 Defending in the upper right is more important. even though this is very big.
 8 Jump out from 6: this is small-scale thinking.
 18 Still better to play in the upper right – White's left side is still a framework (CRM Not clear: this is a big play and now Black only has to survive in the upper right).
 19 Too tight – jump to 24. 30 Don't bother. This isn't even really *sente*.
 33 Play one to the left (CRM Not obvious to me.)
 35 Take the 24 stone instead (CRM Not obvious to me.)
 37 Too distant for attacking purposes.
 48 Leads to a poor exchange from Black's point of view. 56 Don't bother.
 61 Just too small to worry about. 70 Good (CRM Saves key stone 52, iffy shape).
 Black went on to win by five. (CRM This is from review #2587, if you want to download the file. It was a random sample, and the comments seem generally helpful and appropriate.)



From the front page White 1, 3 and 5 are natural enough. The point of the problem is to visualise White 7, snapback, in answer to Black 6: White cannot connect.